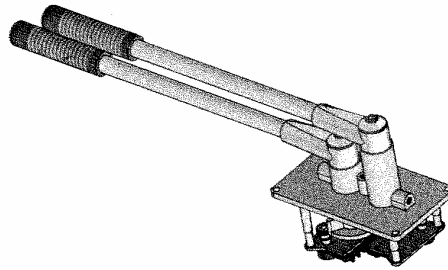


## Model 7195 Stacked FFU Lever Controller



This dual stacked lever controller provides full follow up control of the dual steering gear systems commonly found on Push Boats. These vessels are a regular sight on the Mississippi and adjoining river systems. One steering gear controls the steering rudders aft of the propellers and the other the flanking rudders forward of the propellers.

The 7195 is intended for use with electric over hydraulic steering systems. To complete the systems, a 7173-K steering amplifier, steering (directional control) solenoid valve and Rudder feedback unit complete with potentiometers and limit switches such as our 7174-A is required for each gear. For systems with more than one station, a transfer box and station selector switches at each station are also required

Operating the FFU lever controller allows the hydraulic steering gear to move in the desired direction. When the handle is released, the FFU lever stays in that position (does not spring back to center) and the steering gear will continue to move ("FOLLOWING UP") until it reaches that predetermined position, at which point the amplifier will stop the steering gear from moving further and holds at that position. The position of the rudders is proportional to the position of the FFU lever. Returning the lever to midship will cause the steering gear to "FOLLOW UP" to the midship position and stop and stay there until the next signal is given.

The 7195 is available with one potentiometer for each handle with a maximum of two potentiometers per handle and each handle includes a friction tensioning device. The top handle (usually for the flanking rudder system) also comes with a center detent. The standard handle length is 16" (18" from center of hub) but can be made shorter or longer on request. The controller (with the exception of switches and potentiometers) is constructed entirely of die cast bronze complemented by stainless steel hardware for longevity in a marine environment.

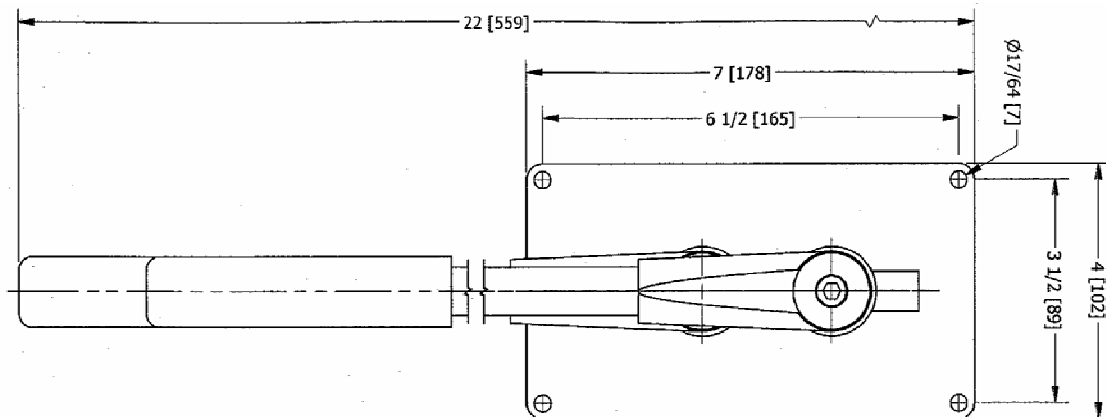
**CAUTION** Before selecting FFU mode of steering control at a given station, align the steering lever with the position of the rudder. The lever must be within a few degrees of the rudder before selecting FFU mode at that station. The helm order indicator and rudder angle indicator must match before selecting FFU mode control.

Net weight: 9.5 lbs. (4.3 kg) approx.

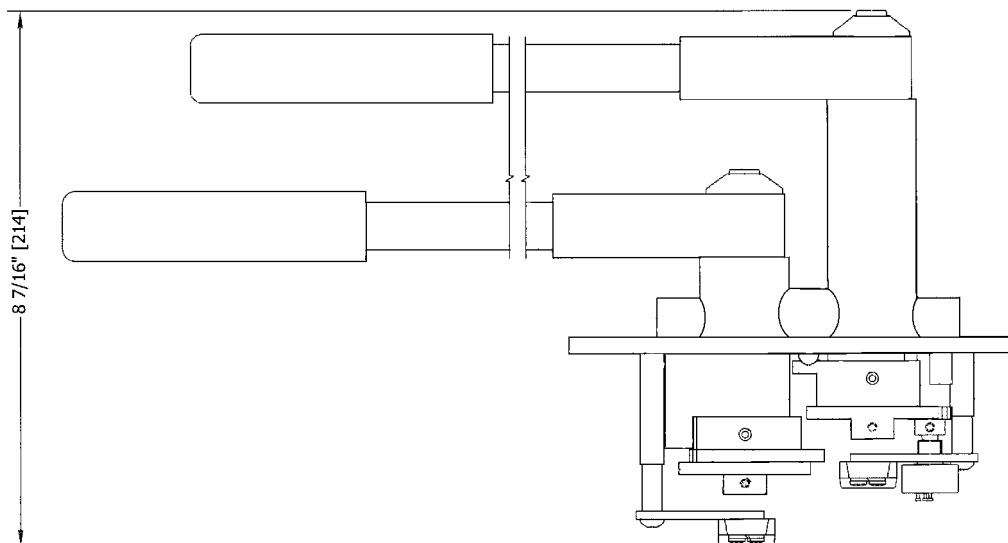
Dimensions: see other page

Options: finish – black or chrome

No. of potentiometer – one (standard) or PP - two potentiometer per handle

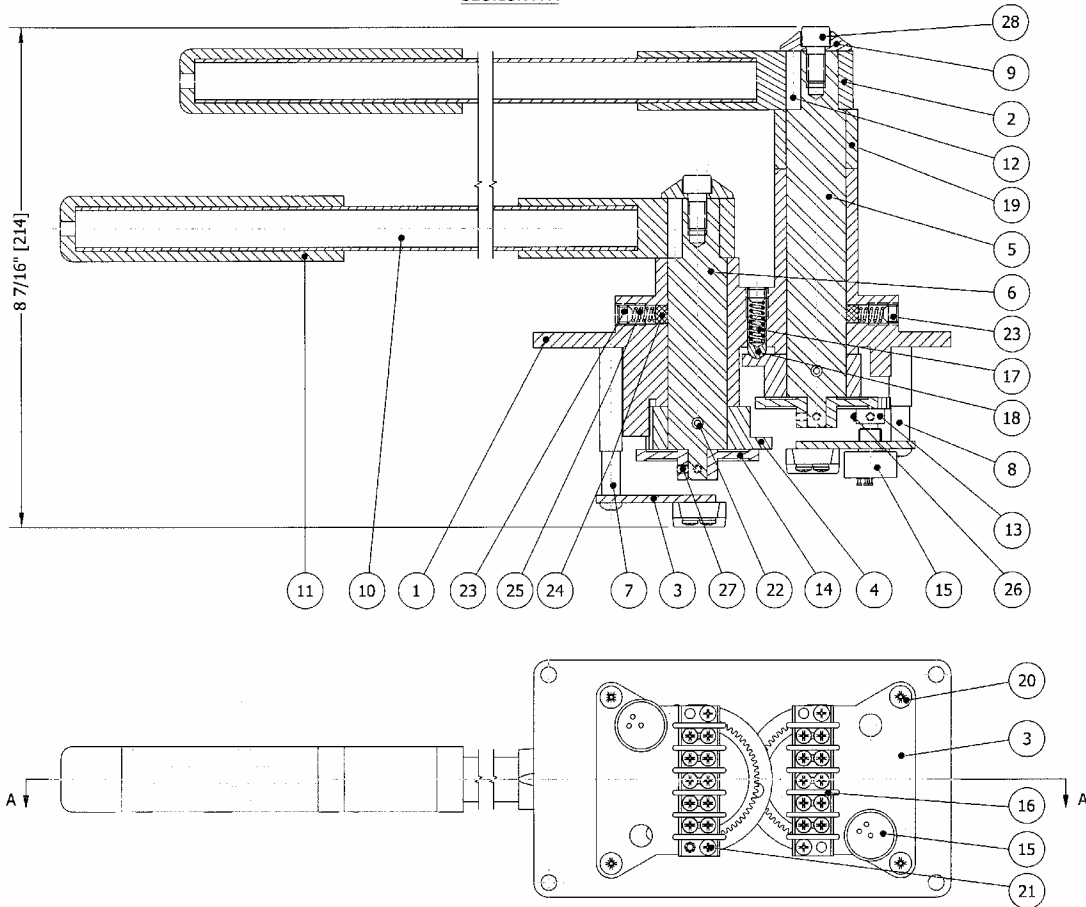


Dimensions are in inches [mm]



# MODEL 7195

SECTION A-A



Item	Qty	Part No.	Description	Item	Qty	Part No.	Description
1	1	7195-0001	Body	15	2	POT-1	Potentiometer 1K
2	2	7195-0002	Handle	16	2	6009-0005	Terminal block
3	2	7195-0003	Bracket	17	1	1201-0062	Spring
4	2	7195-0004	Cam	18	1	2012-0007	Detent plunger
5	1	7195-0005	Shaft - long	19	1	7195-0013	Spacer
6	1	7195-0006	Shaft - short	20	4	1010-0820	Round head screw
7	2	7195-0007	Spacer - long	21	4	1012-0606	Pan head screw
8	2	7195-0008	Spacer - short	22	2	1024-0824	Spring Pin
9	2	7195-0009	Handle cap	23	3	1016-1104	Set screw
10	2	7195-0010	Handle tube	24	2	2016-0011	Friction plug
11	2	7195-0011	Handle grip	25	2	1201-0002	Spring
12	2	7195-0012	Key	26	4	1016-0602	Setscrew
13	2	Y-3220	Brass gear	27	4	1016-0603	Setscrew
14	2	.YPB-3264	Gear	28	2	1002-1110	Hex socket cap screw



8238 – 129<sup>th</sup> Street, Surrey, B.C. Canada V3W 0A6  
Telephone: 604-572-3935 Fax: 604-590-8313

03/2010